

16 Gang Programmer For High Volume

*Flash*PROIII-16G

High Density High Quality High Speed Gang Programmer

Overview

FlashPRO III-16G is 16 Gang programmer for a High density, High quality and High speed production. Also supports NOR and NAND with user file systems (Bad Block Management). It state of the art technology and high speed programming algorithm optimize throughput, reliability and yields. FlashPRO III-16G also supports fast download data via ethernet, stand alone and local mode operation. Today, flash memory market is required more than just production and testing tools.

Features

- Stand Alone 16 Gang programmer
- Built-in PC Programmer
- Supports high density flash memory
- Supports PC Software
- Network operation
- Keypad, LCD display, Status LEDs
- Supports NAND Bad Block Handling



Programming Speed With 100% Data in Memory

Device P/N	Size	Erase	Blank	Program	Verify
KLMBG8FE4B-B	1GByte	5sec	45sec	47sec	46sec
SDIN7DU2-8G	1GByte	5sec	36sec	82sec	41sec
THGBM1G5D2	1GByte	9sec	42sec	83sec	48sec

Specification

Device Support

- NOR Flash memory
- NAND Flash memory
- OneNAND, FlexOneNAND
- Serial Flash (SPI, I2C, Microwire etc...)
- Flash Media (eSD, eMMC, moviNAND, iNAND, etc...)

Socket Adapter

- Convert device package to ZIF48 socket
- Supported Device Package
 - DIP,SDIP,PDIP,LCC,PLCC,QFP,TQFP,PQFP,VQFP,SOIC,SOP,PSOP,SON,TSOP,TSOP2,STSOP,TSSOP,SSOP,BGA,uBGA,FBGA,EBGA,CSP,SCSP

Software

Device Command

- Erase, Blank check, Program, Verify, Read, Option
- Data file edit, Calculate Checksum & CRC
- Data file transfer

Support File Type

- Binary, Intel Hex, Tekhex, Motorola S-record, ASCII and other file format

Minimum System Requirements

- Pentium 4 or better
- Windows 2000/XP/Vista/7
- Ethernet
- 200MB Free hard disk space
- 256MB RAM

Hardware

Embedded PC Specification

- Intel Pentium G2130 (3.2GHz)
- DDR3 16GB RAM
- SSD 128GB
- Ethernet (1000Mbps)
- USB3.0
- Serial Port
- Windows Embedded Standard 7

Interface Port

- Data Transfer Interface
 - Ethernet (10/100/1000Mbps)
 - USB3.0
- Control Interface
 - Ethernet, Serial Port (Max 115.2K)

Power

< Programmaer >

- Operation Voltage: 85~264VAC
- Frequency Range : 47~63Hz
- Rated Power : 330W

< Embedded PC >

- Operation Voltage: 88~264VAC
- Frequency Range : 47~63Hz
- Rated Power : 75W

Dimensions

397(D) x 380(W) x 130(H)mm

Weight

11.47Kg

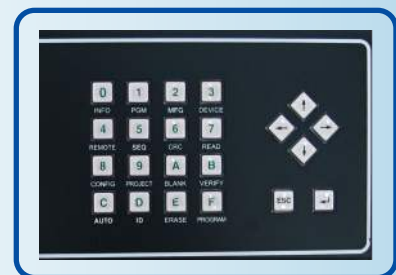
Operating Temperature

0 - 40°C(32 to 105°F)

Images



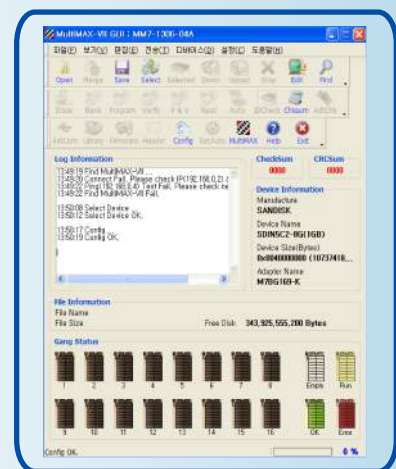
[LCD]



[Keypad]



[Back Side]



[User Interface]